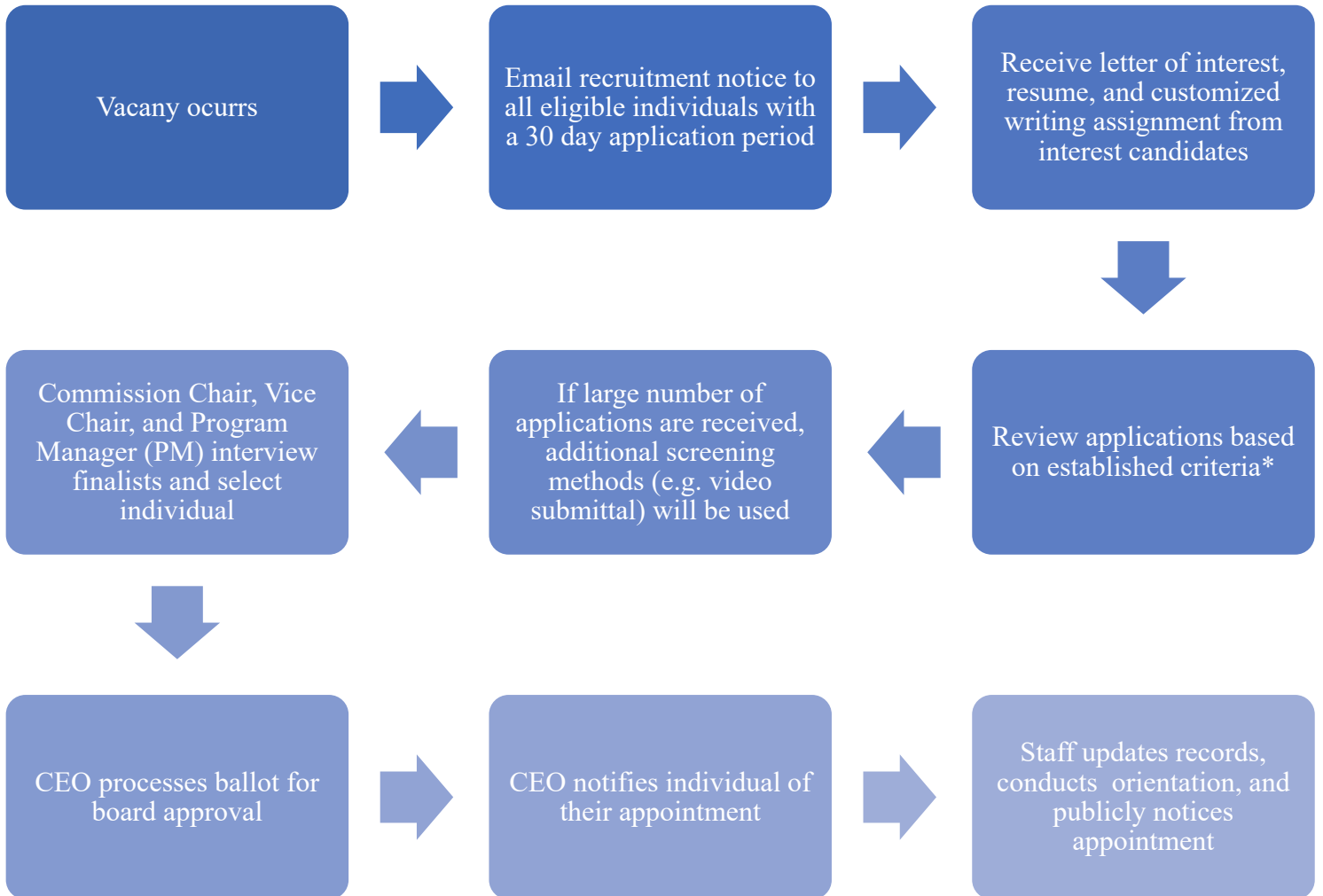
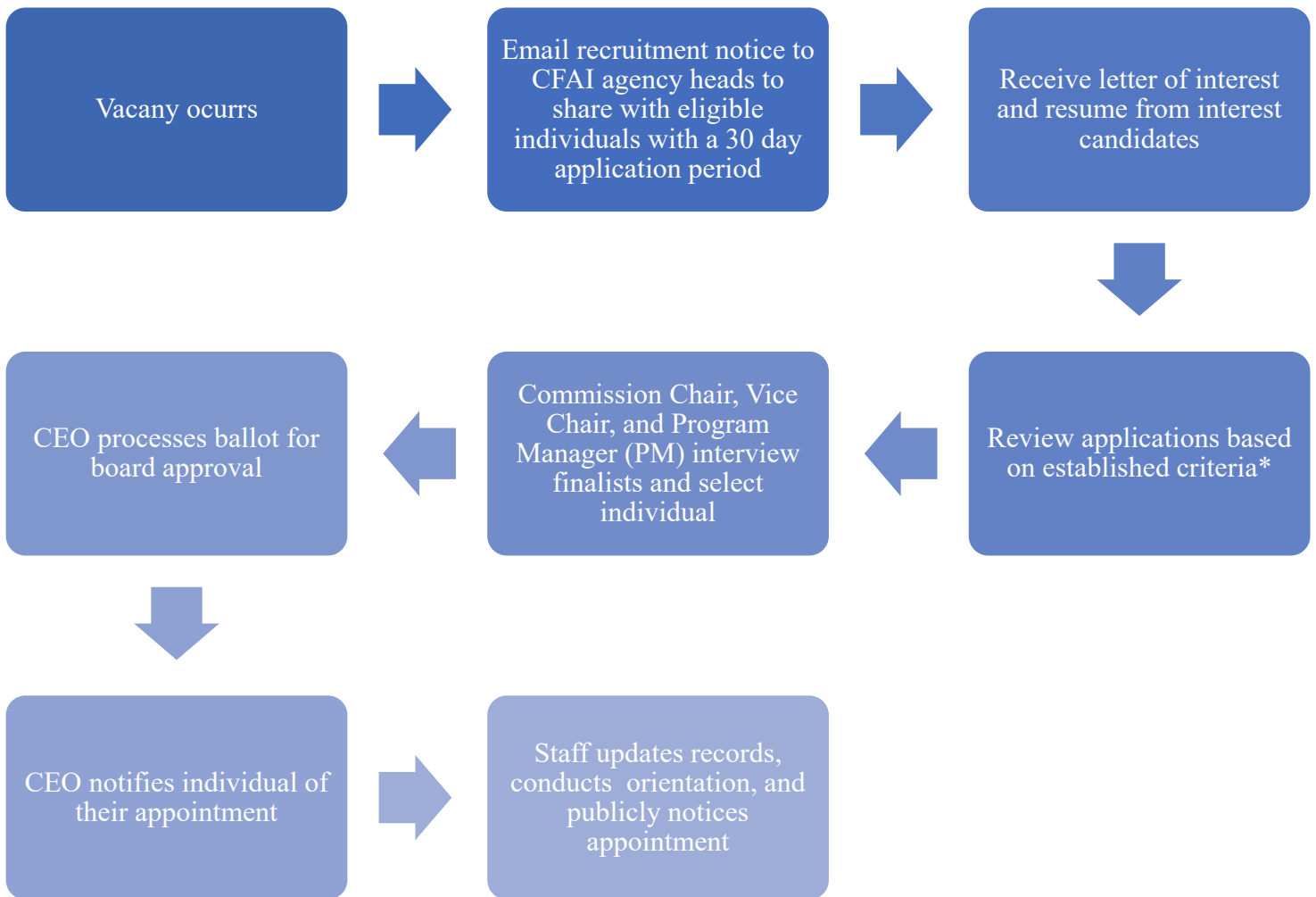


Commission Agency Head/Designee Recruitment Process



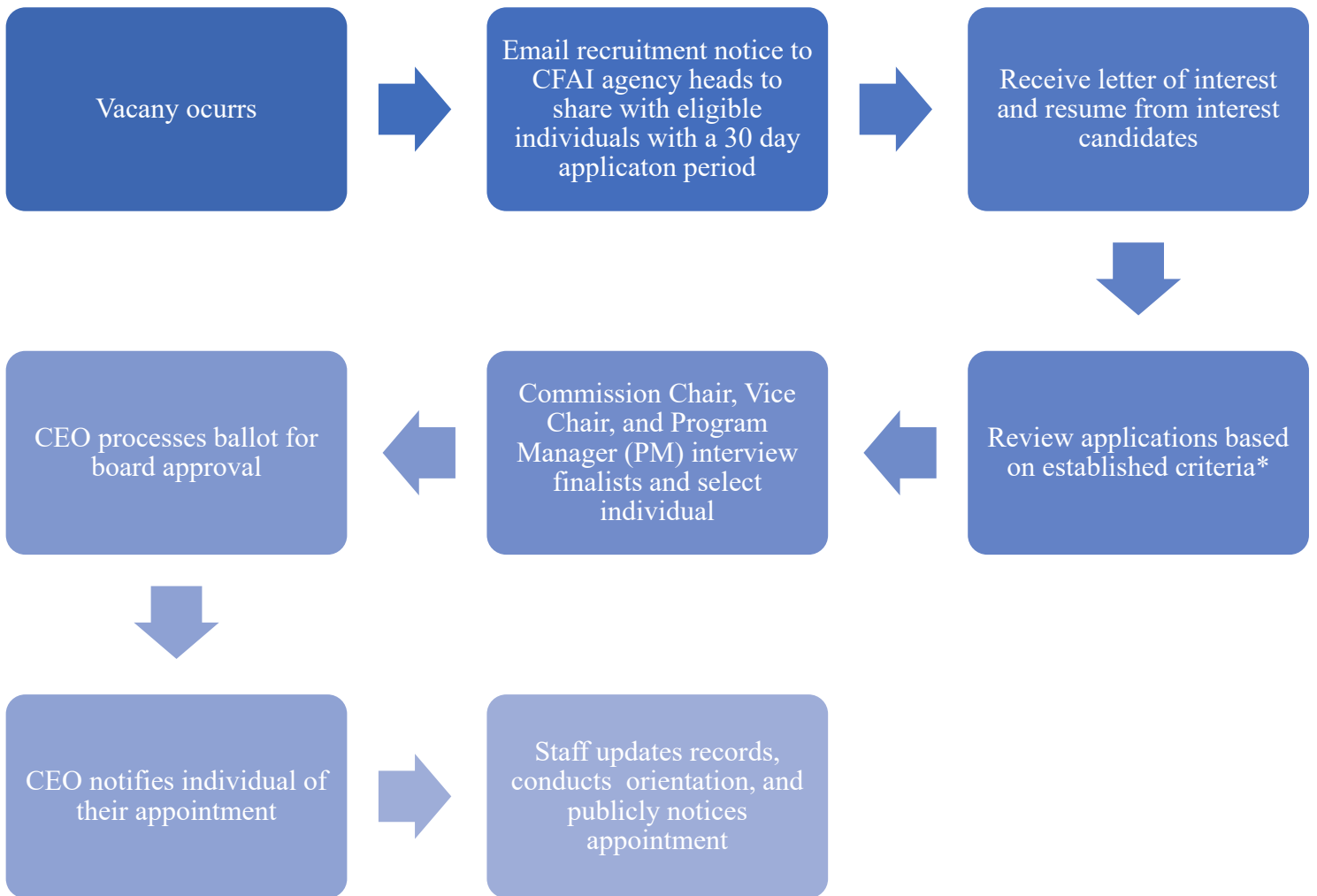
**Applications are reviewed based on quality of submittal, level of CPSE engagement, level of fire and emergency service engagement, level of community engagement, commitment to continual learning, professional and ethical comportment, and individuals' rounding out of commission.*

Commission City/County Manager Recruitment Process



**Applications are reviewed based on quality of submittal, level of CPSE engagement, level of fire and emergency service engagement, level of community engagement, commitment to continual learning, professional and ethical comportment, and individuals' rounding out of commission.*

Commission Labor President Recruitment Process



**Applications are reviewed based on quality of submittal, level of CPSE engagement, level of fire and emergency service engagement, level of community engagement, commitment to continual learning, professional and ethical comportment, and individuals' rounding out of commission.*