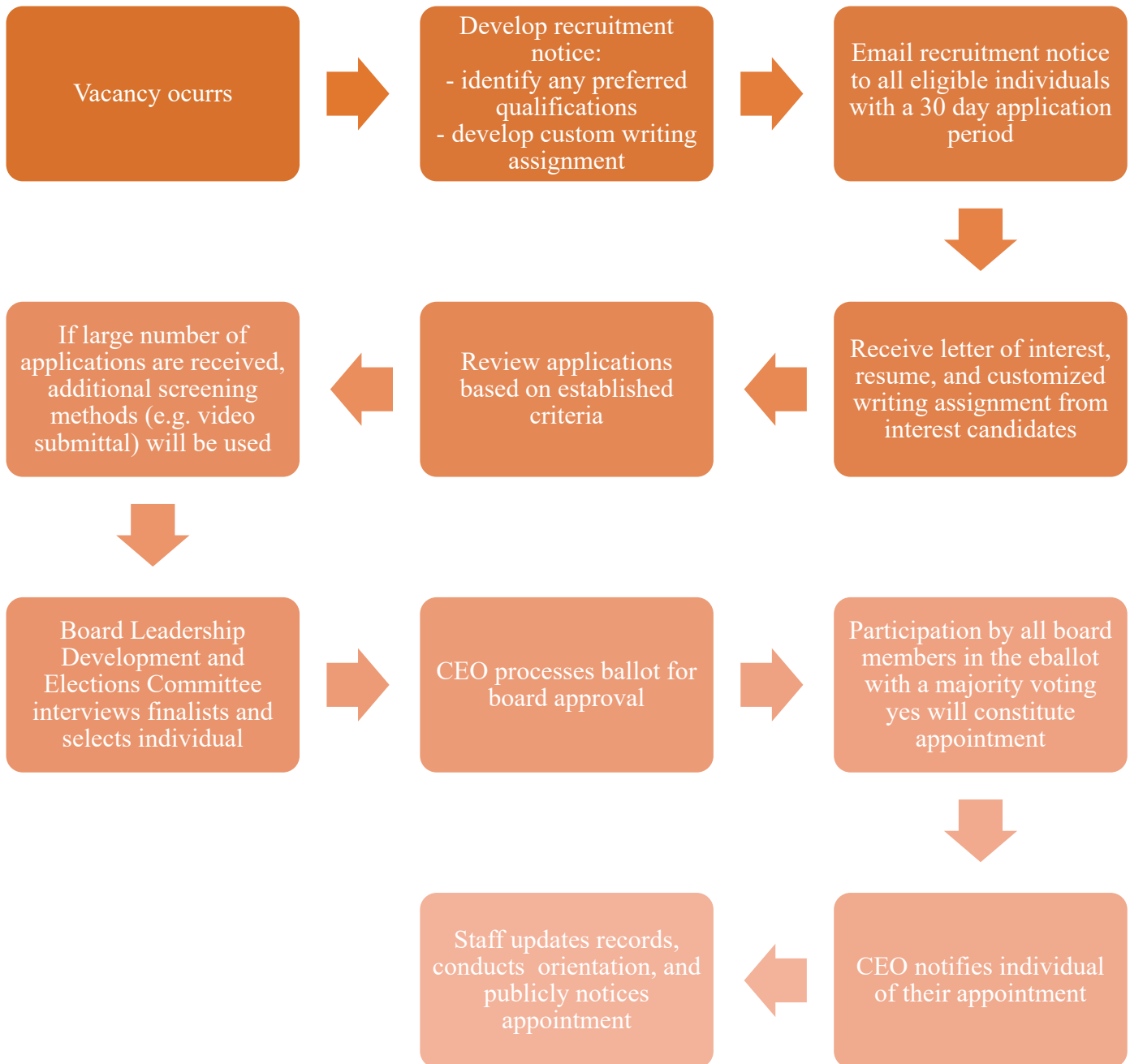
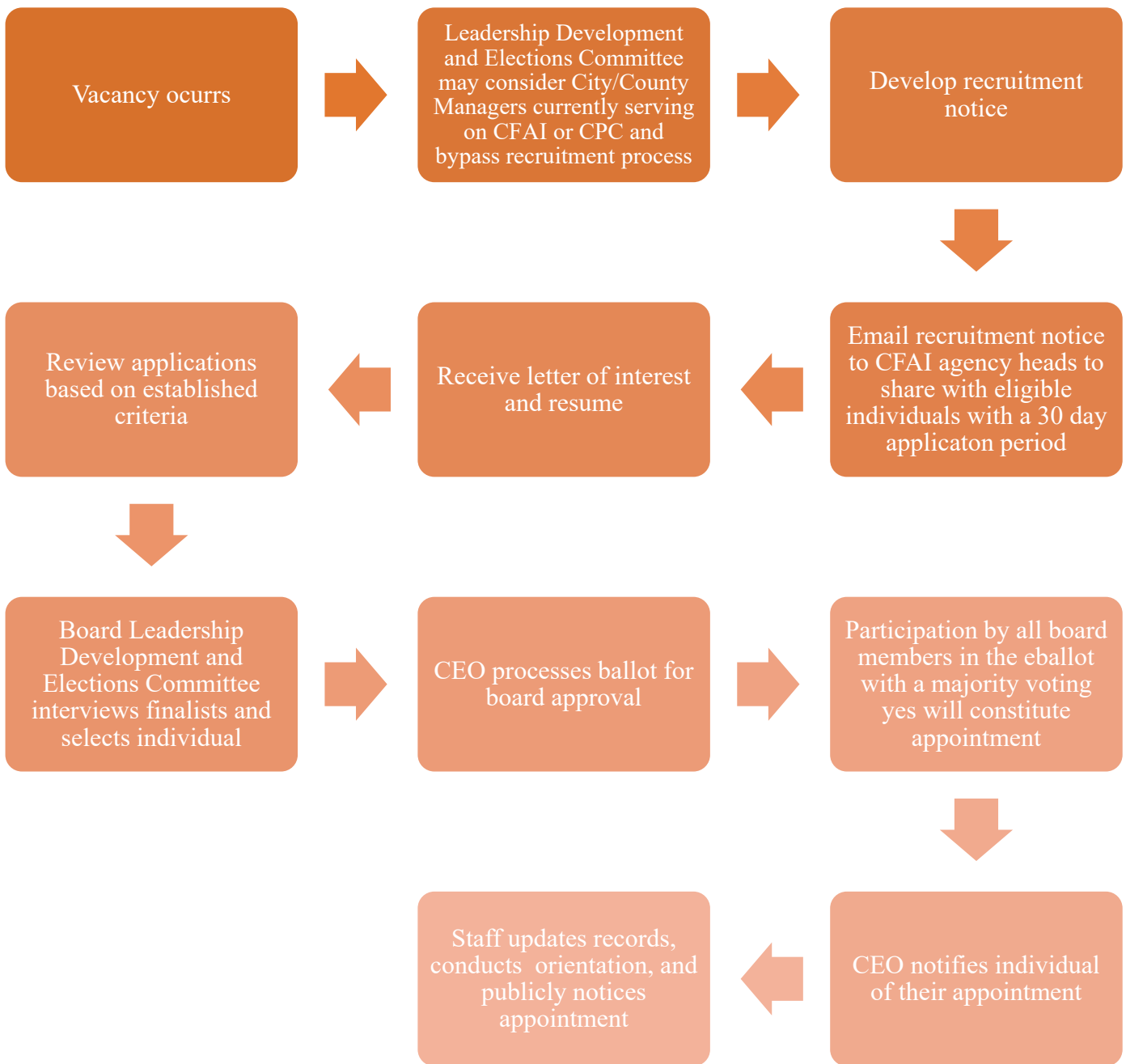


Board Agency Head/Designee Recruitment Process



**Applications are reviewed based on quality of submittal, level of CPSE engagement, level fire and emergency service engagement, level of community engagement, commitment to continual learning, professional and ethical comportment, and individuals' rounding out of board.*

Board City/County Manager Recruitment Process



**Applications are reviewed based on quality of submittal, level of CPSE engagement, level fire and emergency service engagement, level of community engagement, commitment to continual learning, professional and ethical comportment, and individuals' rounding out of board.*

Board Process for At-Large Representative

